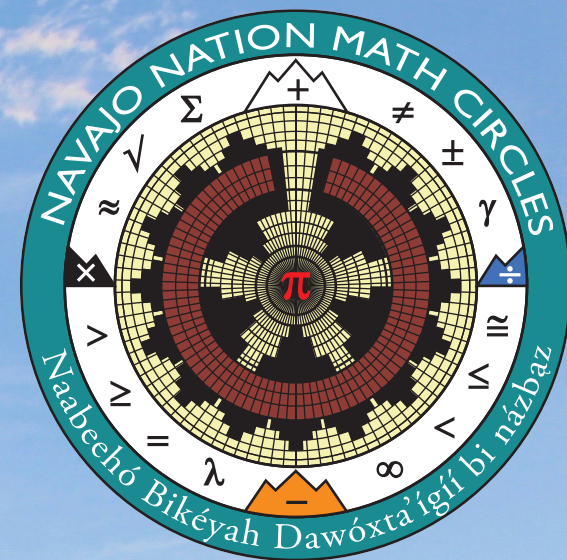


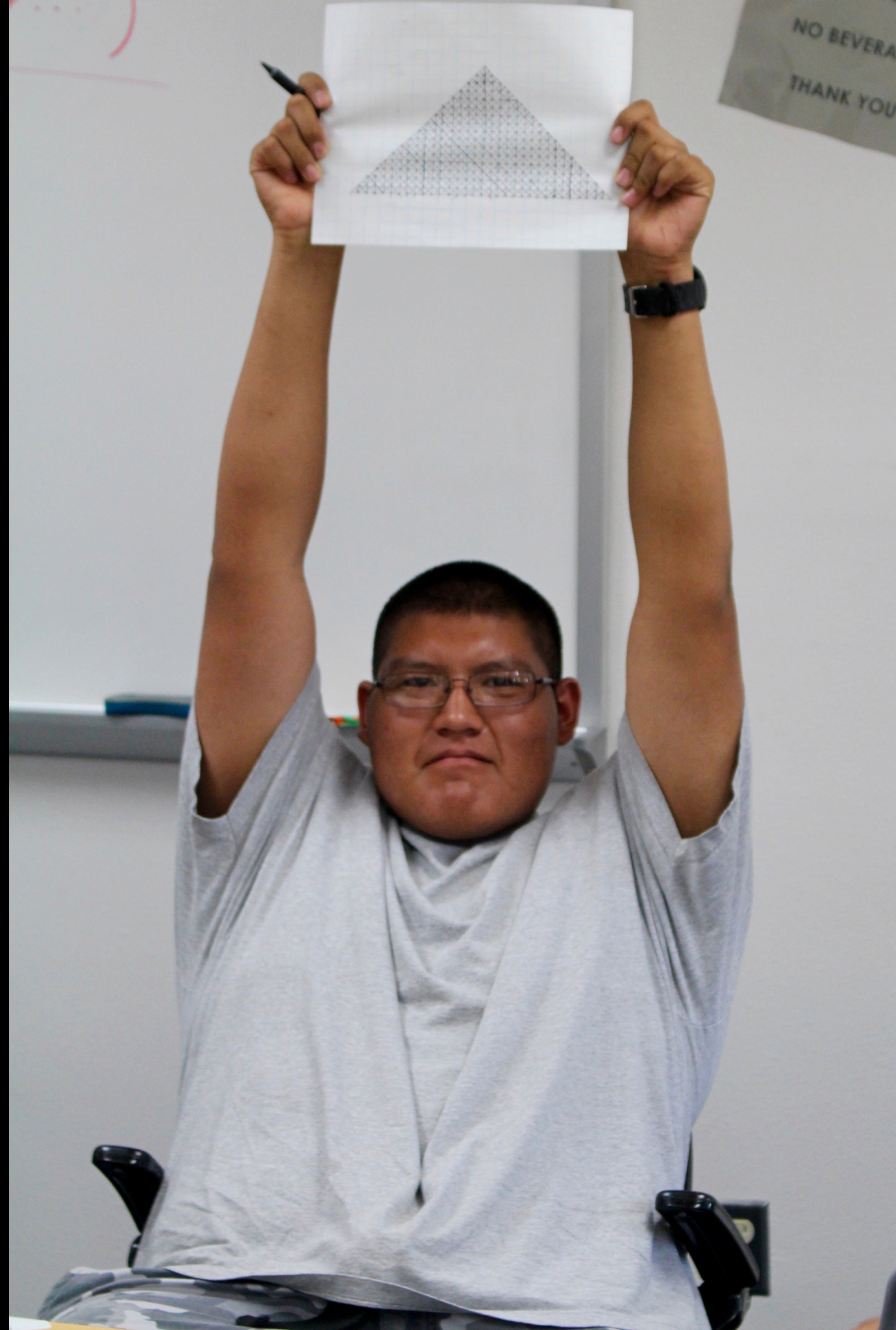
2016 JOINT MATHEMATICS MEETINGS

THE NAVAJO NATION MATH CIRCLE PROJECT



PRIMARY ACTIVITIES YEARS 1-2

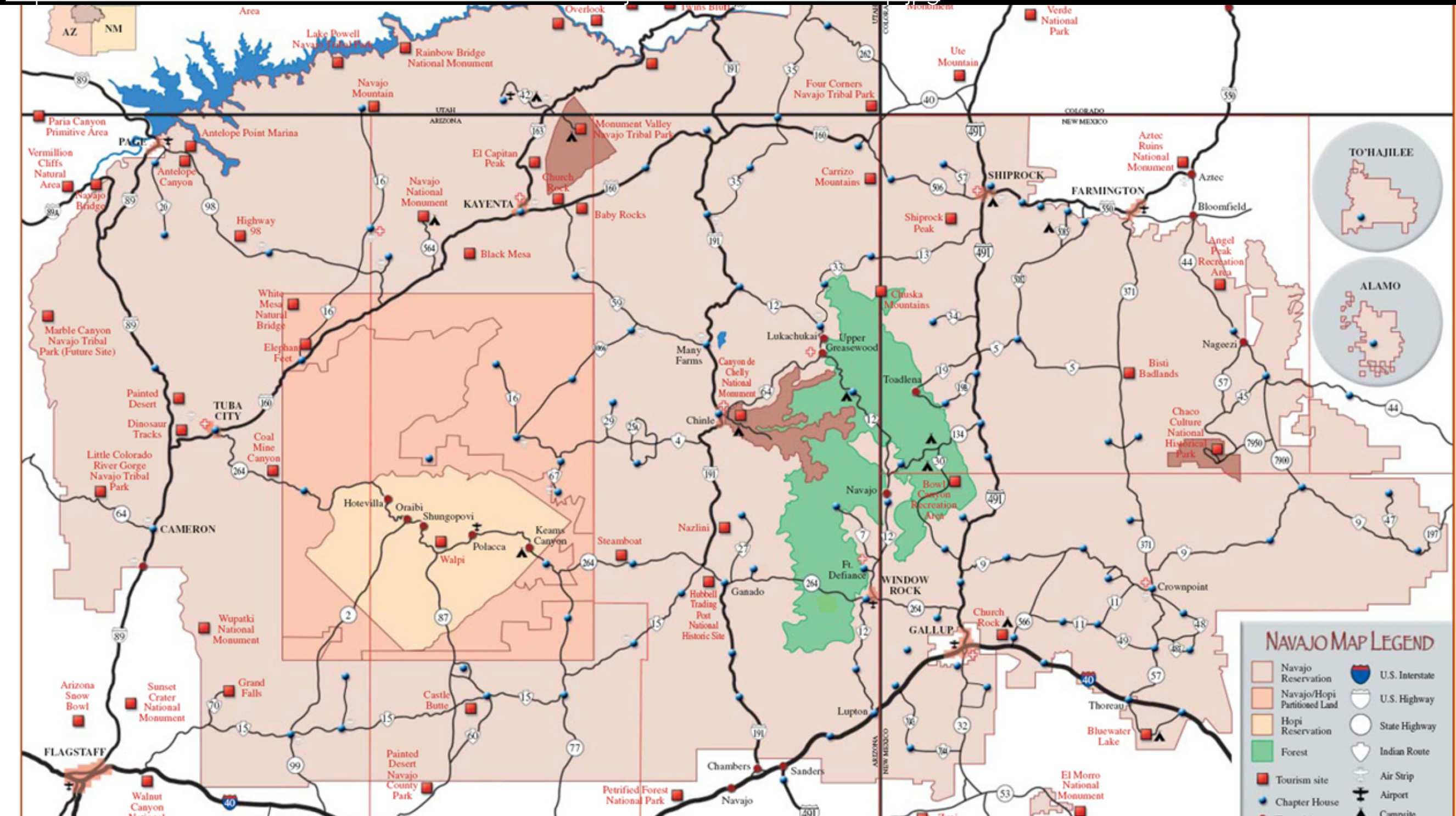
- Two-week, non-residential **summer camp**, students grades 6-12
- **Teacher workshops** throughout the year
- **Mathematicians visit** schools (acad. year)
- Annual **math festival**



SETTING AND CONTEXT

DINÉ BIKÉYAH

<https://nhmu.utah.edu/sites/default/files/attachments/Navajo%20Reservation%20Map.jpg>





NEW(ISH) ACTIVITIES

- **Script** development
- Teacher-led **circle support**
- Student **mentoring** program
- Undergraduate **camp mentors**





BY THE NUMBERS...

- >40 mathematicians have contributed (thanks!)
- >2000 students impacted
- > 250 teachers impacted
- 15 math majors at Diné College (before NNMC: 0)
- >\$200K support (thanks!)

TO LEARN ABOUT THE PROJECT OR CONTRIBUTE

<https://navajomathcircles.org/>

